



Signature 名物 ねぎ塩焼き

Sliced salted beef topped with Tokyo green onion



Premium Tongue “Tongue Shio” 14.0

上ねぎたん塩

Tongue “Tongue Shio” 12.5

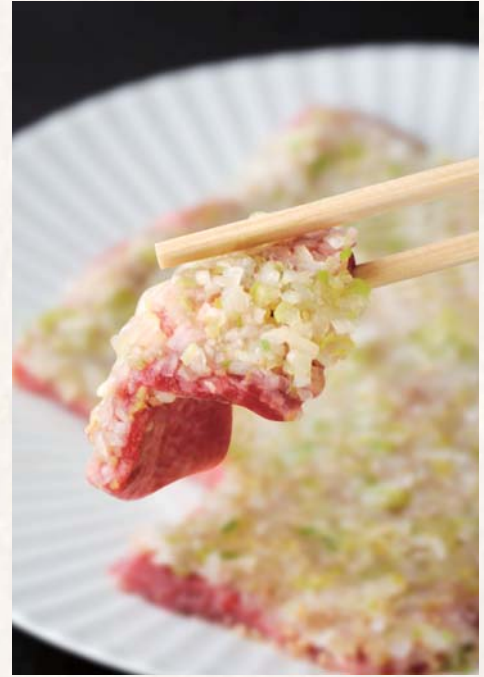
たん塩

Prime Short Rib “Kalbi Shio” 14.5

上ねぎカルビ塩

Prime Outside Sirt “Harami Shio” 12.5

上ねぎハラミ塩



A famous dish with over 60 years of heritage. Its spicy flavor along with crisp, freshly cut onions will leave you wanting more. Truly, a one-of-a-kind experience you can only partake in at Manpuku.

Kobe Chuck Flap / Yaki - Shabu [Ponzu]



American Kobe Wagyu

神戸スタイル和牛

Kobe Rib Eye 神戸リブアイ 32.5

Kobe Filet 神戸フィレ 33.5

Kobe Short Rib 神戸カルビ 24.5

Kobe Toro Tongue 神戸たん 19.5

Kobe Finger Meat 神戸げたカルビ 10.5

Kobe Chuck Flap 神戸焼きしゃぶ 18.5
Yaki - Shabu [Ponzu]